

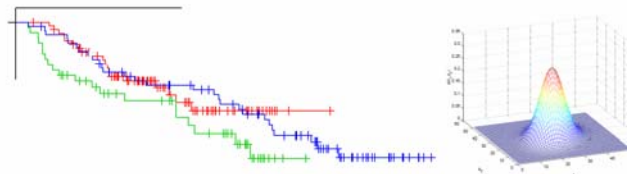
1st Research Contact Day

Computational Intelligence & Learning

Doctoral School

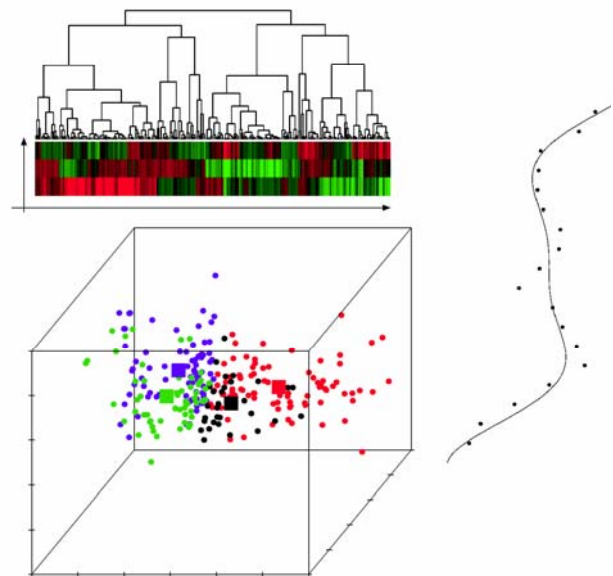
Date & Venue

25 September 2006
Baugniet Auditorium,
Building S, Campus Solbosch, ULB
Avenue Jeanne 44, Brussels 1050



Invitees

Researchers of CIL Doctoral School from
Communauté Française de Belgique &
Vlaamse Gemeenschap
CIL representatives from Industry



Organizers

Machine Learning Group, ULB
Machine Learning Group, UCL

Event Highlights

Oral Presentations from PhD Students
CIL Doctoral School Committee Meetings
Poster Sessions
Social Gathering of Researchers

Registration

Free registration through email

CIL Research Contact Day is sponsored by VADIS Consulting, a data-mining company.

**Machine Learning Group
Université Libre de Bruxelles
Département d'Informatique
Boulevard du Triomphe - CP212
1050 Brussels
Belgium**

www.ulb.ac.be/di/mlg/contactday.html
gbonte@ulb.ac.be

1st Research Contact Day

Computational Intelligence & Learning

Doctoral School

CIL Doctoral School - Oral Presentations - 25 / Sep / 2006

Bagniet Auditorium, Ground Floor, Building S, Solbosch Campus, ULB

Start-time	Presenter	Affiliation	Title
9:00	Welcome Address	-	-
9:15	Introductory Address	-	-
9:25	Youssef Achbany	ISYS, UCL, Louvain-la-Neuve	Optimal Tuning of Continual Online Exploration in Reinforcement Learning
9:50	Alexandre Campo	IRIDIA, ULB, Brussels	Enhancing cooperative transport using negotiation of goal direction
10:15	Pieter Wellens	Artificial Intelligence Lab, VUB, Brussels	How grammar emerges to dampen combinatorial search in parsing
10:40			
11:05	Eveline Hoekx	UHASSELT, Hasselt	Mining for Tree-Query Associations in a Graph
11:30	Patricia Victor	Comptnl Web Intelligence, UGENT, Ghent	A bilattice-based trust model for personalizing recommendations
11:55	Patrick Meyer	MLG, ULB, Bruxelles	Information-Theoretic Network Inference
12:20			
14:00	Céline Mancas-Thillou	TCTS, FPMS, Mons	Natural Scene Text Extraction for Improved Recognition
14:25	Kim Luyckx	CNTS, UA, Antwerp	Stylometry research using syntax-based features and machine learning techniques
14:50	Marco A. Montes de Oca	IRIDIA, ULB, Brussels	An Estimation of Distribution Particle Swarm Optimization Algorithm
15:15			
15:40	Joaquin Vanschoren	DL & AI Research Grp, KULEUVEN, Leuven	Towards Understanding Learning Behavior
16:05	Cuvelier Etienne	Institute of Informatics, FUNDP, Namur	A probability distribution and density for functional random variables
16:30	Carlos Alzate	ESAT-SCD-SISTA, KULEUVEN, Leuven	An Out-of-Sample Extension for Spectral Clustering based on Weighted Kernel PCA
17:00	Poster		